

REHEARSAL SCHEDULE

Sat. Aug. 1-Zoom

1:00 - Read thru

2:00 - Music

3:00 - Mummings A (Room, St. George, Father Xmas, Dragon)

3:30 - Mummings B (St. George, Dragon, Corona V, Doctor)

Tue. Aug 4

6:00 - Music Zoom

7:30 – Scene 1 (Megan, Mary, BJ, Michelle) Jefferson Park

Thur. Aug 6— Jefferson Park

6:00 – Music

7:30 – Story (Matt B/Kelsey, Matt O/Megan, Harold/Holly and Michelle)

Sat. Aug 8-Jefferson Park

1:00 – Music

2:00 – All – Meadow falling scene

2:30 – Story

3:00 – Mummings A

3:30 – Mummings B

4:00 – Scene One

Tue. Aug 11-Jefferson Park

6:00 – Music

7:00 – Music w/ BJ

7:30 – Scene One

Thur. Aug. 13- Jefferson Park

6:00 – Music

7:00 – Music w/ BJ

7:30 – Story

Sat. Aug 15- Jefferson Park

1:00 – Music

2:00 – Mummings A

2:30 – Mummings B

3:00 – TBA

Tue. Aug. 18- Jefferson Park

6:00 – Music

7:00 – Music w/ BJ

7:30 – Mummings A, then B

8:00 – Story

Thur. Aug. 20- Jefferson Park

6:00 – Music

7:00 – Music w/ BJ

7:30 – Scene One

Sat. Aug. 22-

1:00 – Scenes TBA at Edgewood

Tue. Aug. 25-

6:00 – Scenes TBA at Edgewood

Thur. Aug 27

6:00 – Scenes TBA at Edgewood

Saturday and Sunday, August 29 and 30

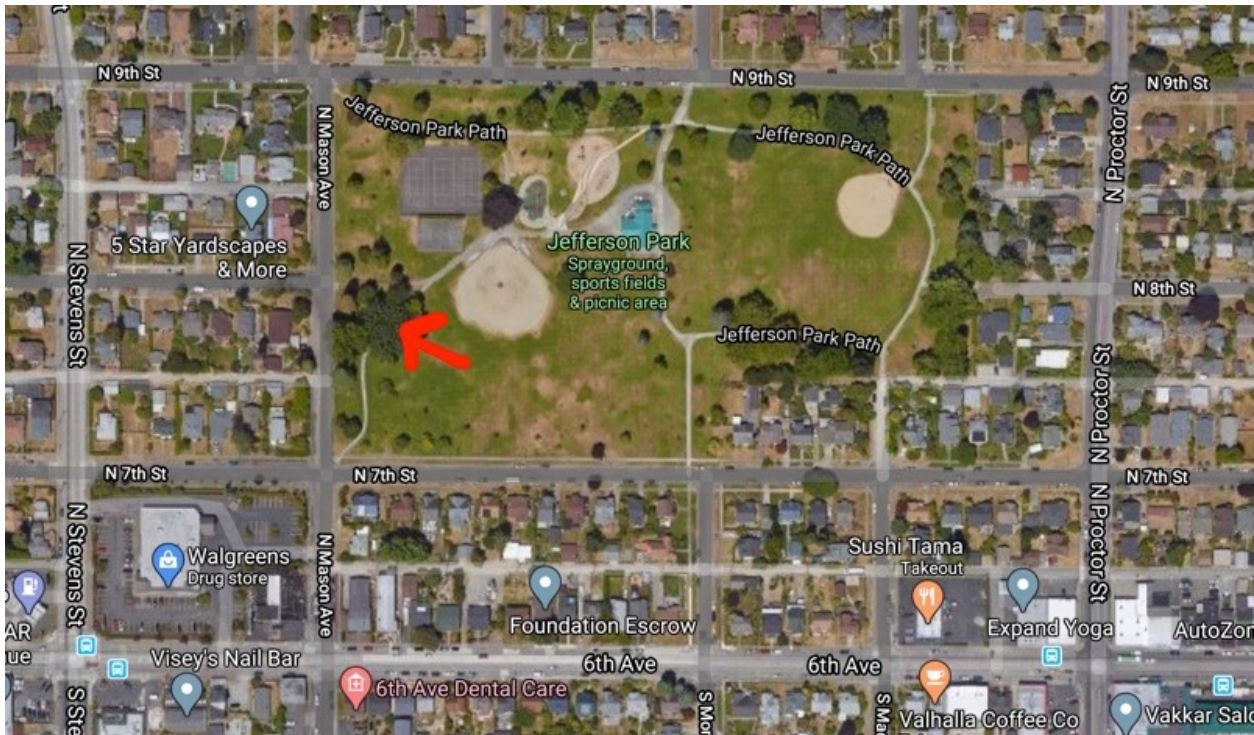
Shooting – Schedule TBA

Wear Masks. Bring chairs, bug spray, fluids, etc. Pee before you come.

Jefferson Park

<https://www.metroparkstacoma.org/place/jefferson-park/>

We'll aim to set up under this big tree on the N. Mason Avenue side of the park.



Edgewood Garden 12727 32nd St E, Edgewood WA

From Seattle and north of Edgewood:

Take I-5 South

Take exit 142B. Turn left at Hwy 161/Enchanted Parkway.

Go through Edgewood; continue straight past the light at 8th St. E.

Turn left at 32nd St. E (there is no light, but the numbers increase in a clear pattern.)

Go to the end. Turn left into the gated driveway.

From Puyallup:

Get on Meridian going north. Climb the long, winding hill.

Turn right on 32nd St. E.

Go to the end. Turn left into the gated driveway.

From Tacoma and south:

Take I-5 North

Take exit 142B. Turn left at Hwy 161/Enchanted Parkway.

Go through Edgewood; continue straight past the light at 8th St. E.

Turn left at 32nd St. E (there is no light, but the numbers increase in a clear pattern.)

Go to the end. Turn left into the gated driveway.